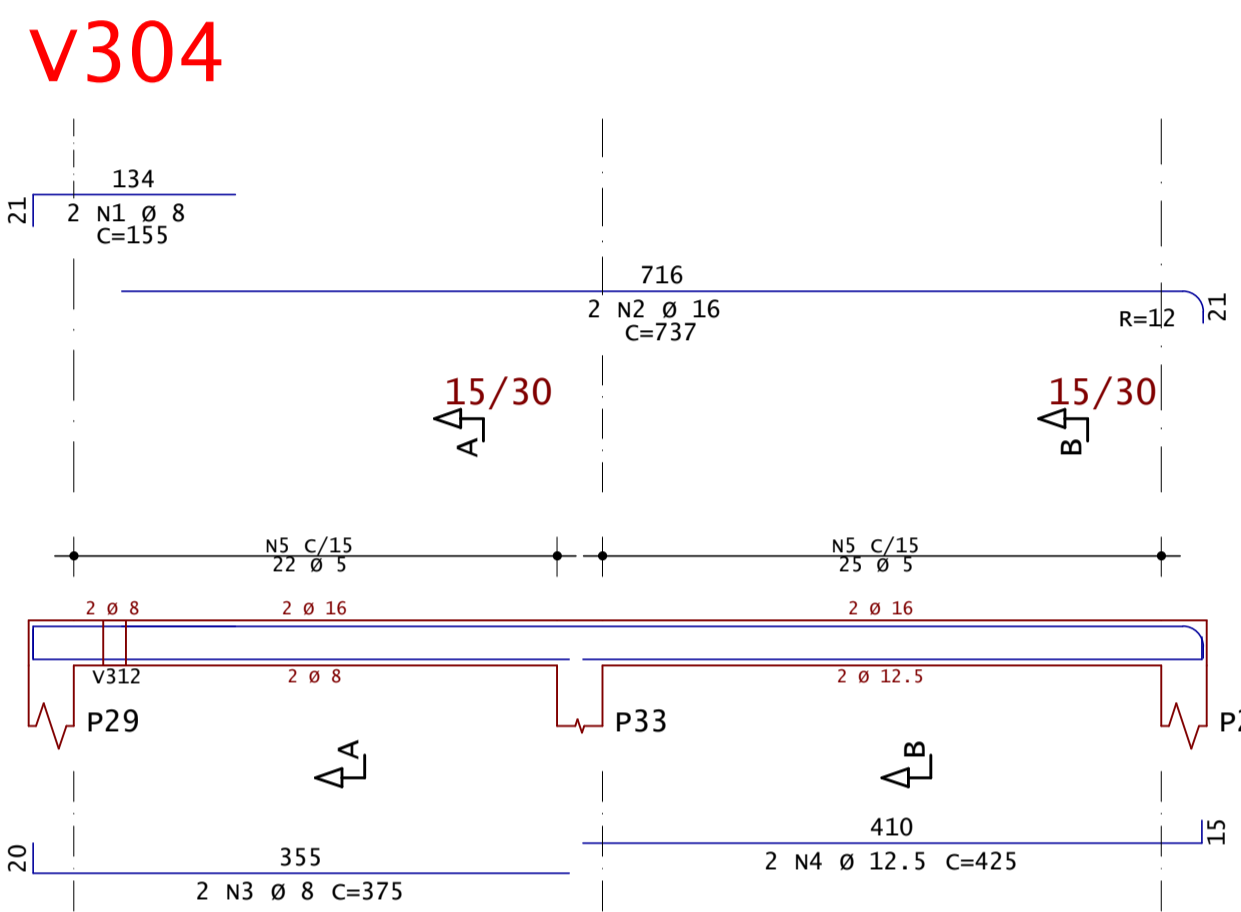
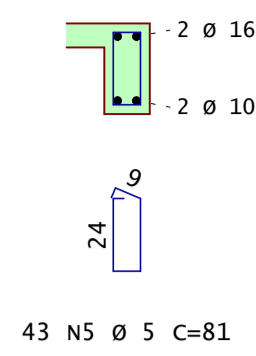
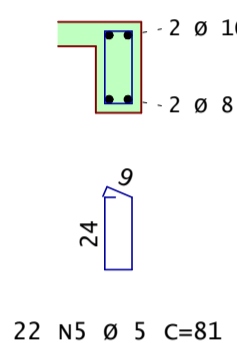


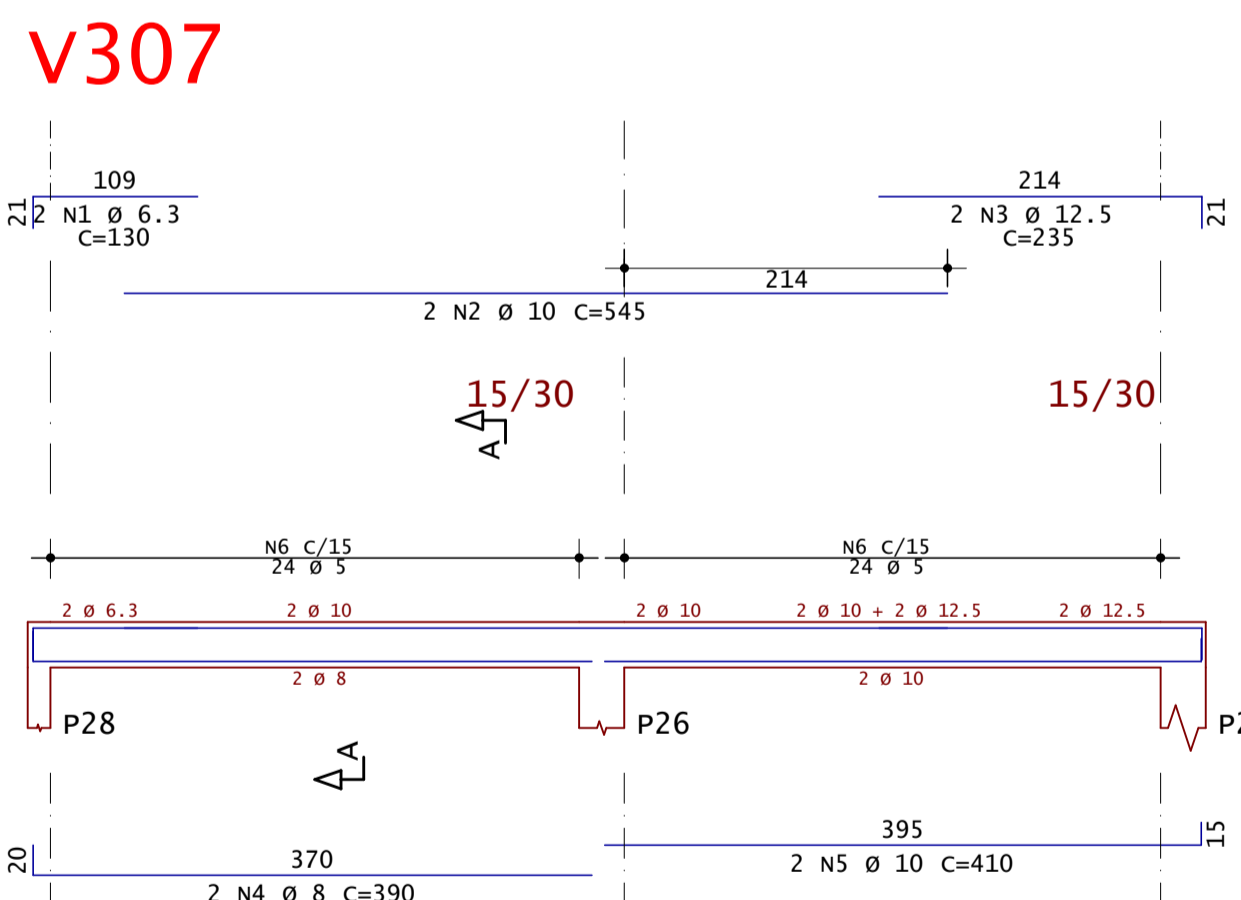
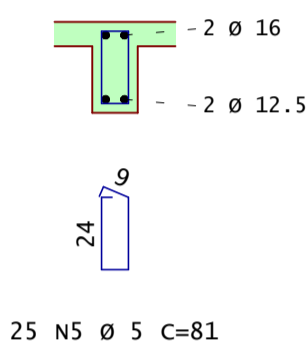
Corte A



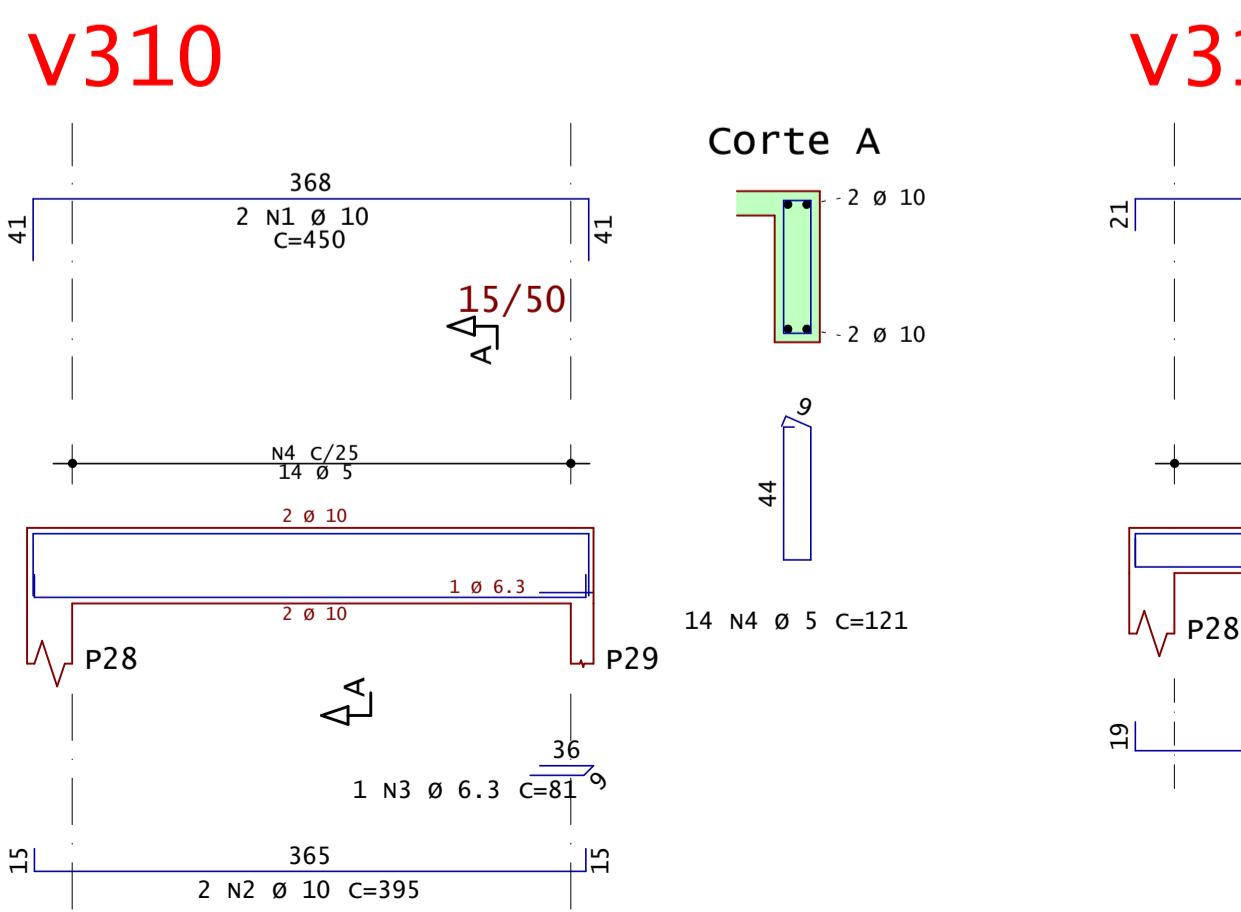
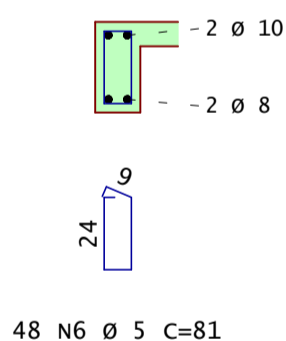
Corte A



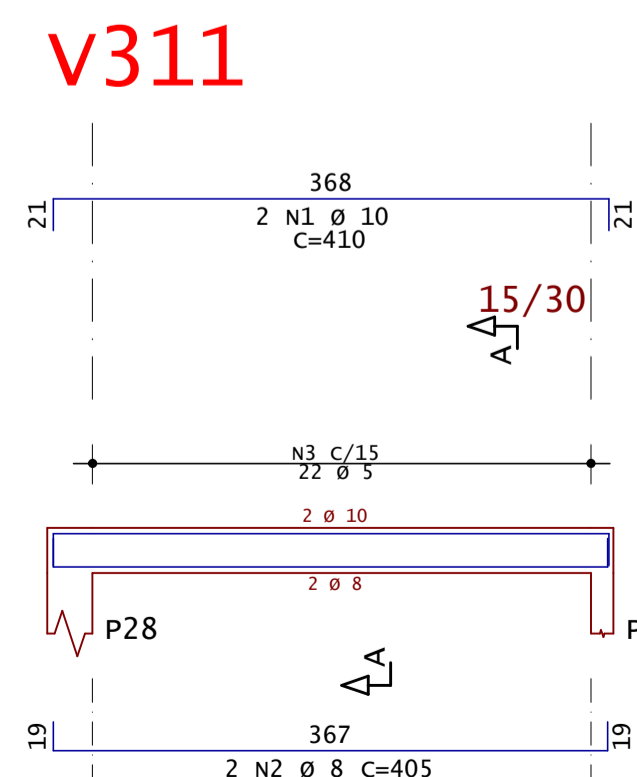
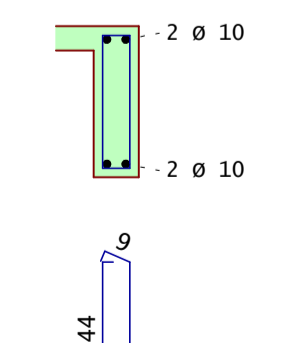
Corte B



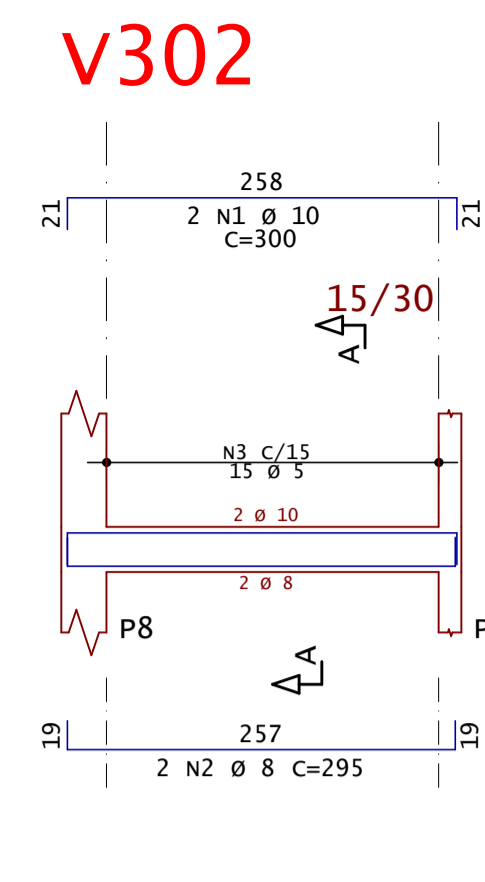
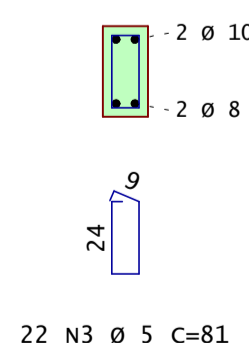
Corte A



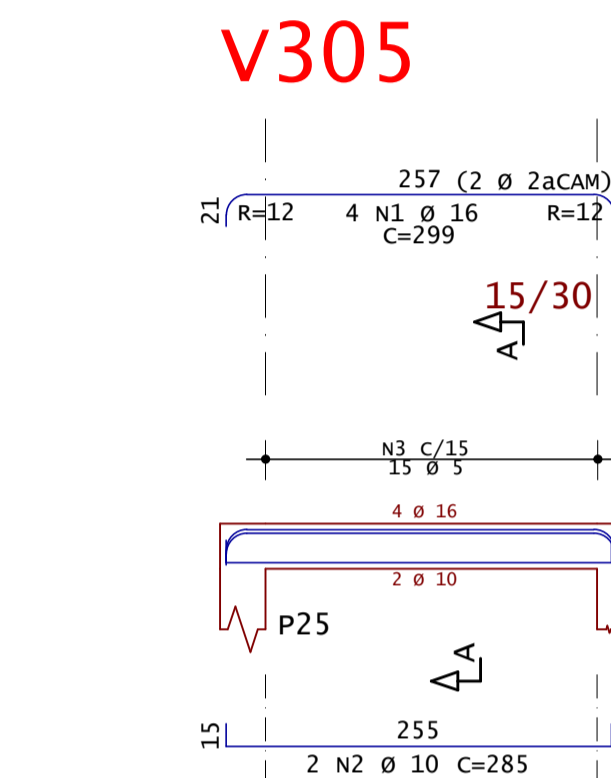
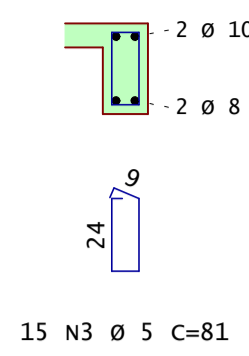
Corte A



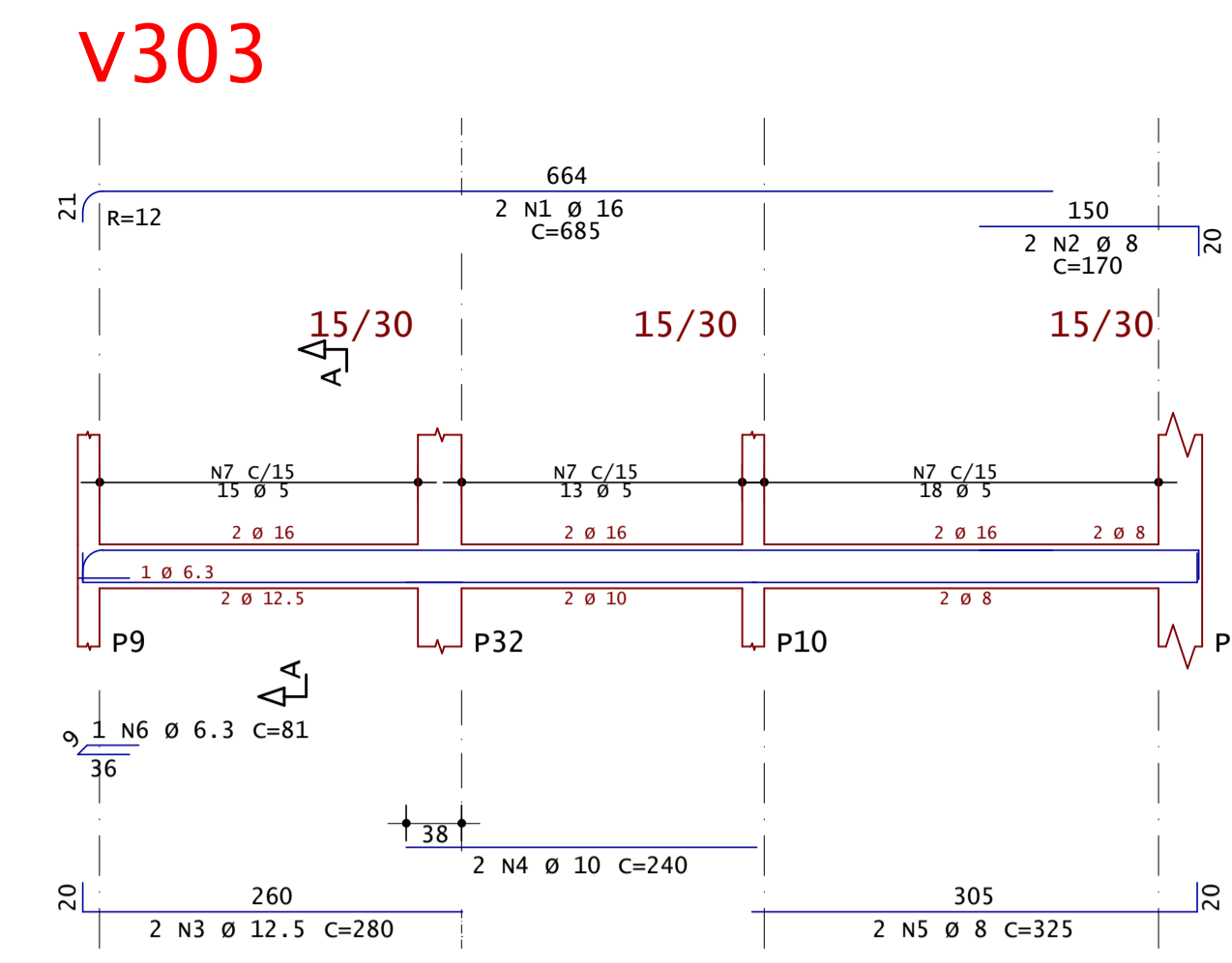
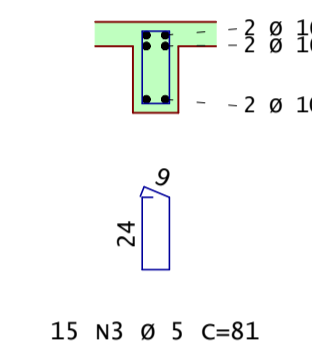
Corte A



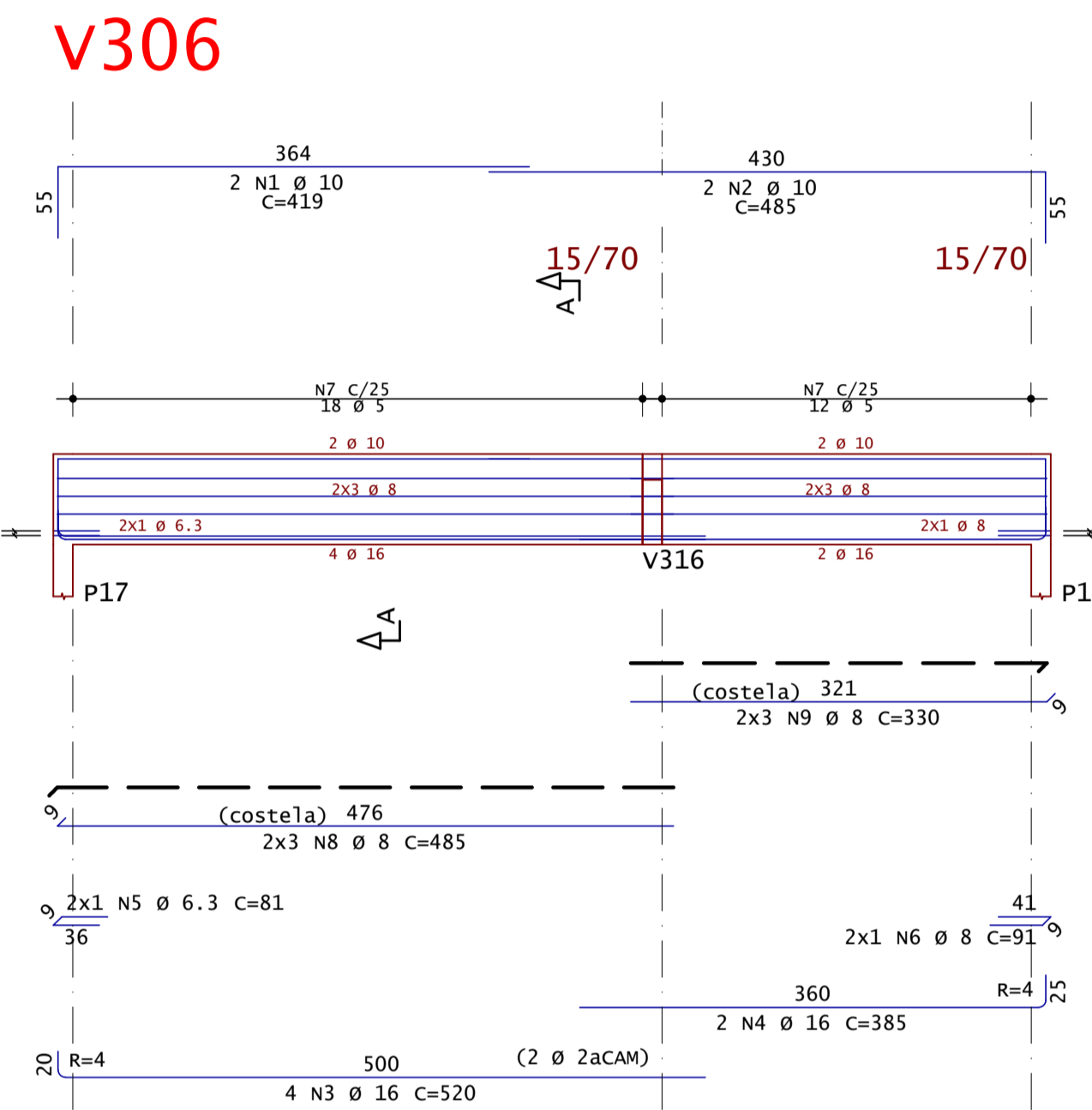
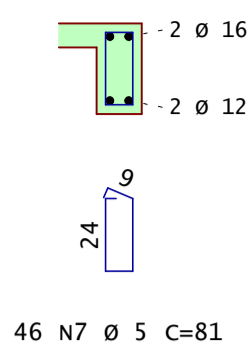
Corte A



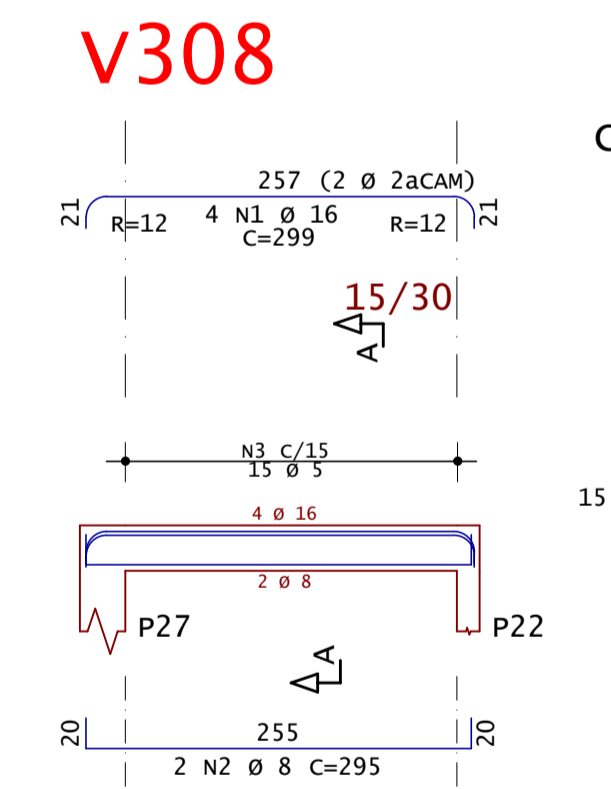
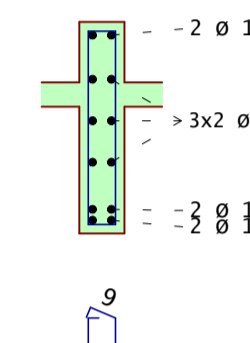
Corte A



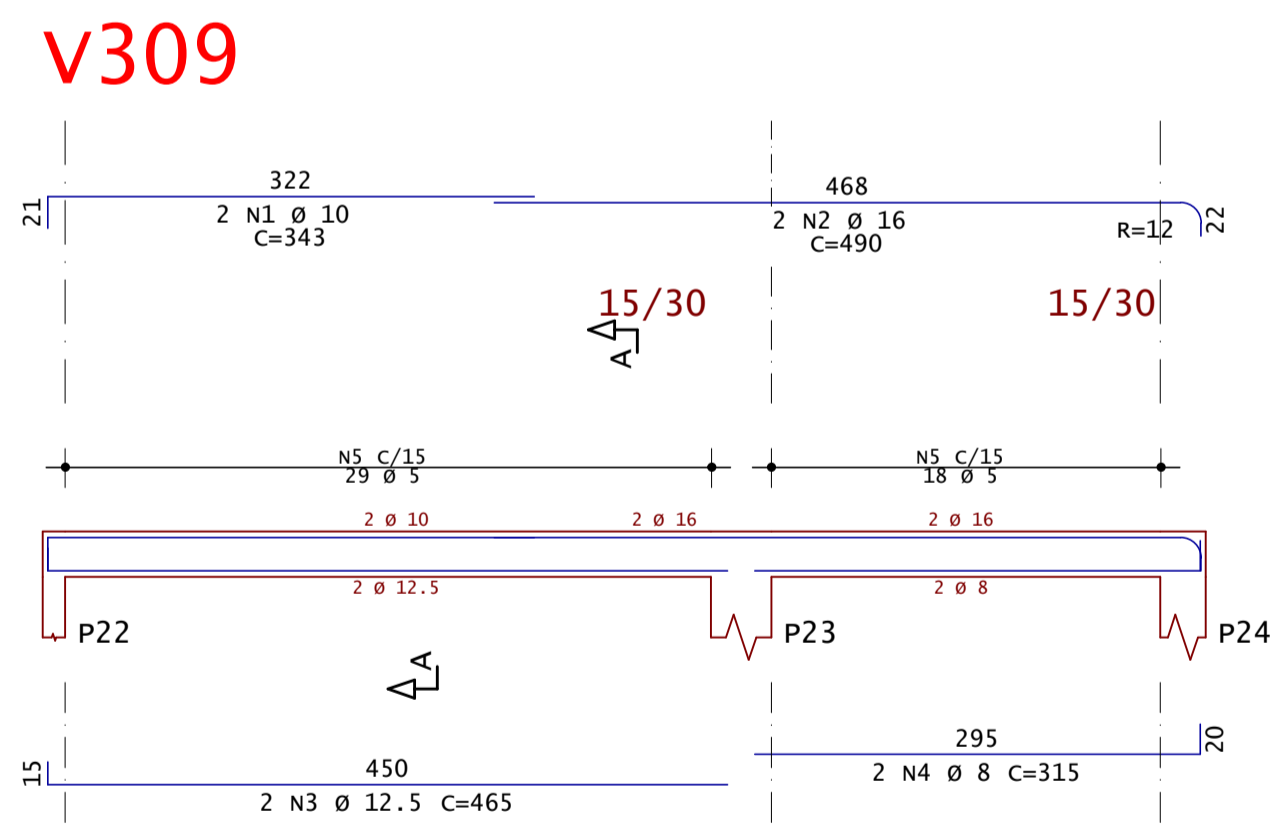
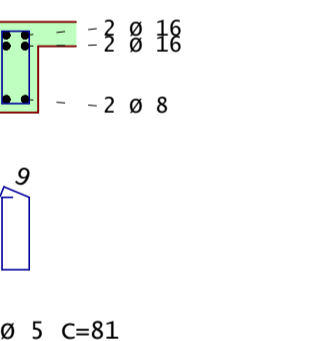
Corte A



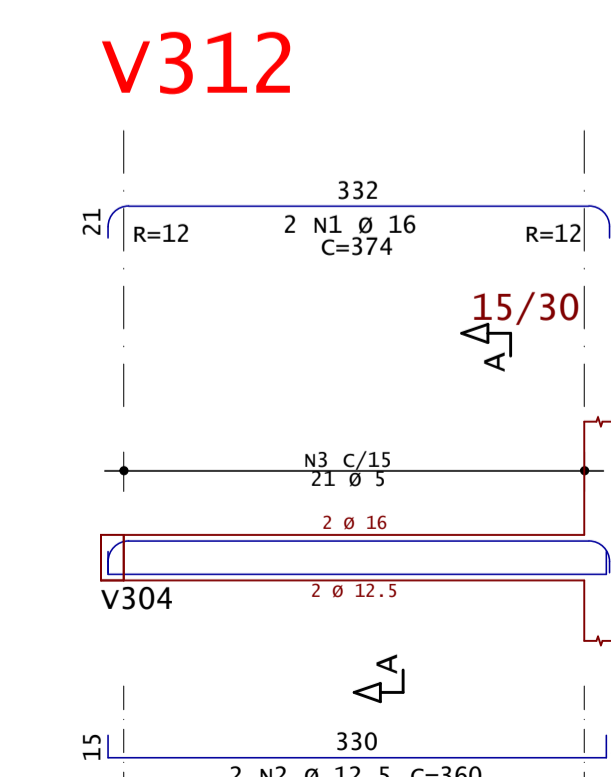
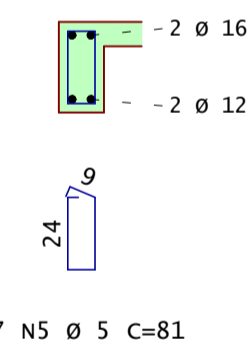
Corte A



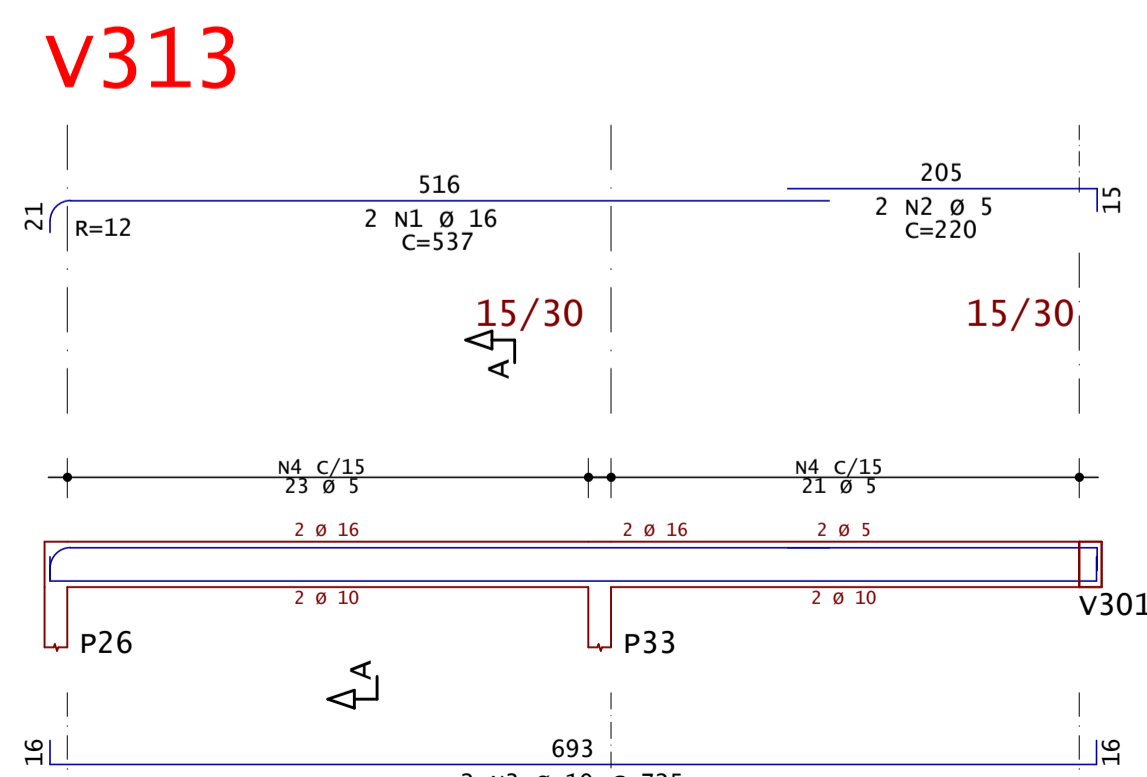
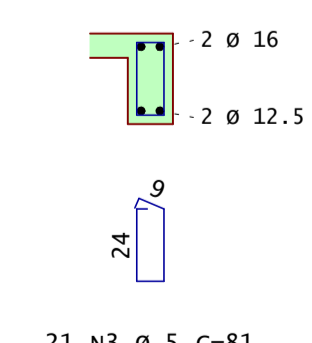
Corte A



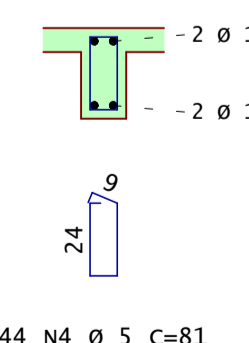
Corte A



Corte A



Corte A



AÇO	POS	BIT	QUANT	COMPRIMENTO		
				UNIT	TOTAL	
		mm		cm	cm	
V301	50A	1	16	2	503	1006
	50A	2	16	2	313	626
	50A	3	10	2	455	910
	50A	4	8	2	315	630
	60A	5	5	43	81	3483
V302	50A	1	10	2	300	600
	50A	2	8	2	295	590
	60A	3	5	15	81	1215
V303	50A	1	16	2	685	1370
	50A	2	8	2	170	340
	50A	3	12.5	2	280	560
	50A	4	10	2	240	480
	50A	5	8	2	325	650
	50A	6	6.3	1	81	81
	60A	7	5	46	81	3726
V304	50A	1	8	2	155	310
	50A	2	16	2	737	1474
	50A	3	8	2	375	750
	50A	4	12.5	2	425	850
	60A	5	5	47	81	3807
V305	50A	1	16	4	299	1196
	50A	2	10	2	285	570
	60A	3	5	15	81	1215
V306	50A	1	10	2	419	838
	50A	2	10	2	485	970
	50A	3	16	4	520	2080
	50A	4	16	2	385	770
	50A	5	6.3	2	81	162
	50A	6	8	2	91	182
	60A	7	5	30	161	4830
	50A	8	8	6	485	2910
	50A	9	8	6	330	1980
V307	50A	1	6.3	2	130	260
	50A	2	10	2	545	1090
	50A	3	12.5	2	235	470
	50A	4	8	2	390	780
	50A	5	10	2	410	820
	60A	6	5	48	81	3888
V308	50A	1	16	4	299	1196
	50A	2	8	2	295	590
	60A	3	5	15	81	1215
V309	50A	1	10	2	343	686
	50A	2	16	2	490	980
	50A	3	12.5	2	465	930
	50A	4	8	2	315	630
	60A	5	5	47	81	3807
V310	50A	1	10	2	450	900
	50A	2	10	2	395	790
	50A	3	6.3	1	81	81
	60A	4	5	14	121	1694
V311	50A	1	10	2	410	820
	50A	2	8	2	405	810
	60A	3	5	22	81	1782
V312	50A	1	16	2	374	748
	50A	2	12.5	2	360	720
	60A	3	5	21	81	1701
V313	50A	1	16	2	537	1074
	60A	2	5	2	220	440
	50A	3	10	2	725	1450
	60A	4	5	44	81	3564

RESUMO DE AÇO			
AÇO	BIT	COMPR	PESO
		mm	kgf
60A	5	364	56
50A	6.3	6	1
50A	8	112	44
50A	10	109	67
50A	12.5	35	34
50A	16	125	198
Peso Total	60A =		56 kgf
Peso Total	50A =		344 kgf

Acesse o site pela sua câmera

Modelos 3D  
Arquivos de obra  
Todos os Documentos

**ANDRÉ RODRIGUES**  
Engenheiro Estrutural

(83) 9 9644 2240  
@andrerodrigueseng

andrerodrigues.eng.br  
contato@andrerodrigues.eng.br

Cliente: <b>Cleiton Batista Soares de Lima</b>	Prancha nº: <b>16</b>	Revisão nº: <b>002</b>
Obra: <b>Residência Unifamiliar</b>	Observações: <b>fck 25MPa</b> <b>Eci: 28000 Mpa</b> <b>Atente-se aos cobrimentos</b> <b>Leia o Memorial Descritivo</b>	
Título: <b>• Detalhamento das vigas da Coberta (1/2)</b>		
CREA-PB: <b>161890343-9</b>	ART nº: <b>Pb20210395879</b>	
Data: <b>06 / 10 / 2021</b>	Escala: <b>Indicada</b>	